

LAKE SIDE WALK

A vernacular beacon in Panta de Sau

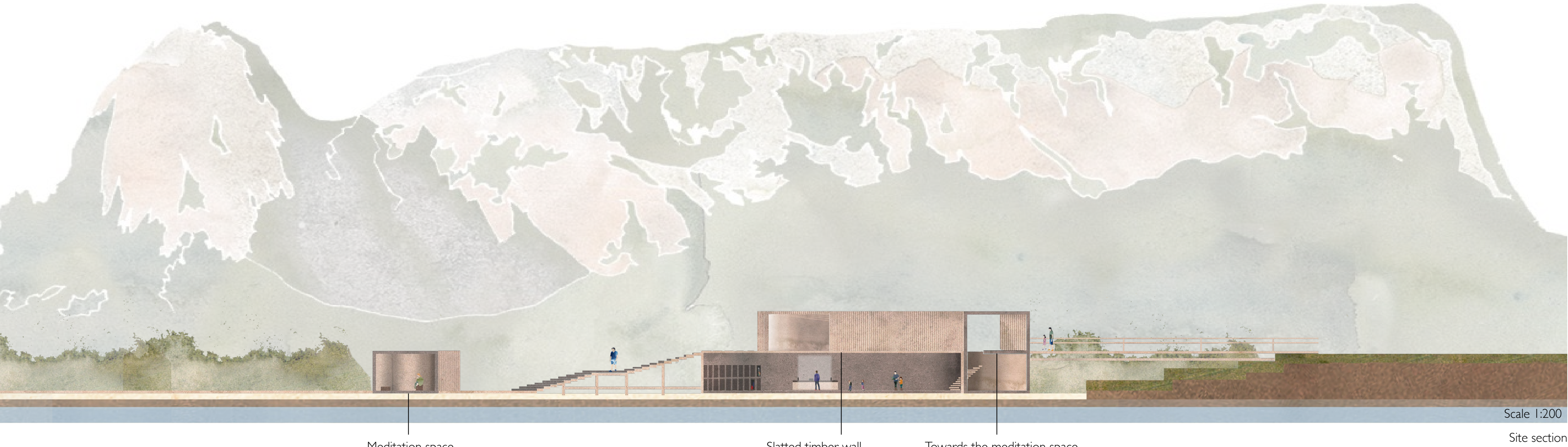
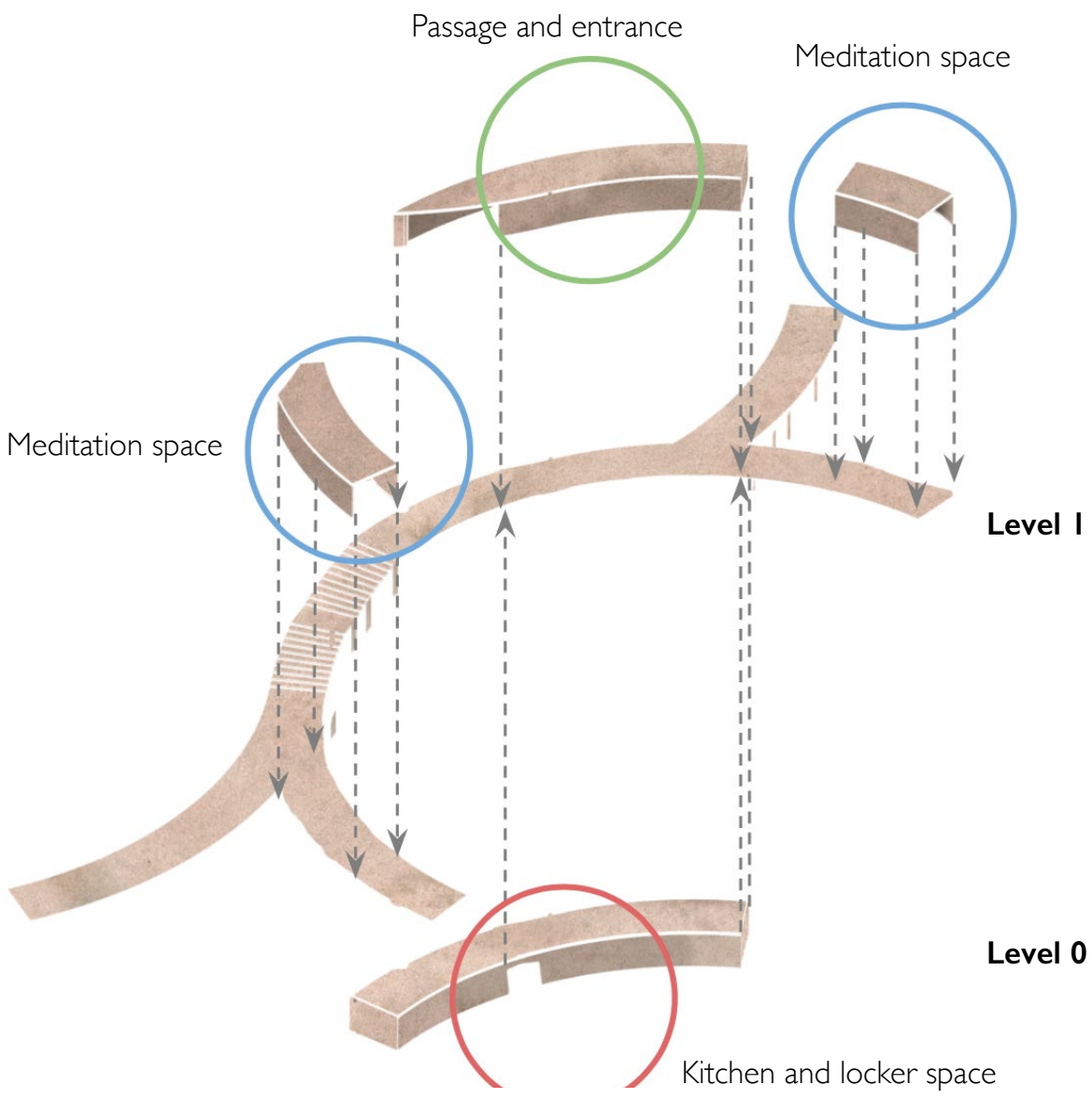
Selin LOSS
Seungdo CHOI
Mathilde SEILLER



Site plan



The meditation area is intimate and focuses on light effects and landscape frames.



Meditation space

Slatted timber wall

Towards the meditation space

Scale 1:200

Site section

Located on the banks of the reservoir of Les Guillerries National Park in Panta de Sau, the project guides locals and tourists in a sensory pilgrimage. The Lakeside Walk combines meditation and gathering zones that are sheltered and connected by a footbridge near the shore. It is a 100 meter long promenade that underlines and plays with the sites curves.

